

WR88 to Maytag Interface

For Maytag Gen. 1 Debit Specification 3SPC628

Rev. 10/2008



General Description

Some Maytag machines come “debit card ready” and provide an interface connector on the control boards for the purpose of interfacing to a debit card reader according to the Maytag Gen.1 Debit Specification 3SPC628. The interface connector provides power to the debit card reader, provides a “machine available” signal to inhibit the debit card reader when appropriate, and requires the debit card reader to produce a “coin pulse” like signal. The IDX WR88 Stored Value Wicket Reader is such a debit card reader.

Machine Compatibility

The below model number codes identify the payment-type options for Maytag machines:

- PD — Microprocessor Coin-Drop
- PR — Microprocessor Debit Card-Ready
- PS — Microprocessor Coin- Slide-Ready
- CS — Mechanical Coin- Slide-Ready
- PC — Microprocessor Coin-Drop

The **PD, PS and PR are all debit card ready.**

Example model numbers would be MxxxxPD-, MxxxxPR- or MxxxxPS-.

Pulse Output - Low Voltage: WK-LV Module

The Model WK-LV Pulse Output - Low Voltage Interface Module was primarily designed for applications powered by either 24VAC or 12-28VDC and requiring a "coin pulse" style interface to activate the service equipment.

Its three diagnostic LED indicators provide visual operational information that may be helpful during installation and for troubleshooting problems. The enclosure dimensions are 3.3" L x 2.2" W x 1.0" H (84mm x 56mm x 20mm) and comes with adhesive Velcro mounting strips. An RJ-11 telephone style connector on the right side of the enclosure is to plug in the WR88 Wicket Reader. A separately ordered wiring harness with 16" leads plugs into the field wiring connector on the left hand side of the enclosure.



The reed relay output provides the required "coin pulse" output and a Service Monitor input is used to determine a) whether to charge the Start Up Amount or the Increment Amount, and b) whether to indicate that the equipment is running (Wicket Reader face turns white).

The WK-WR-LV-MT wire harness is 16" in length and is terminated with a connector for the Maytag Gen 1 Debit Specification for laundry equipment.



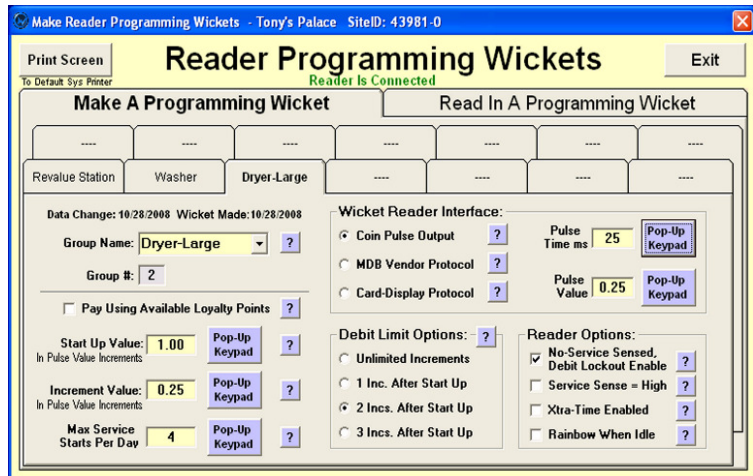
Wire	IDX Name	Maytag Name - Function Description / Specification
1	ServiceMonitor	Avail2 - Optocoupler emitter output for machine available signal.
2	--	Avail1 - Optocoupler collector for machine available signal: = PWR+
3	--	Enable1 - Optocoupler LED anode for debit pulse enable: = PWR+
4	Relay N.C.	Enable2 - Optocoupler LED cathode for debit pulse enable signal.
5	Power Hot	PWR+ - 26VDC @ 100mA max. for debit reader.
6	Power Common	PWR- - Power common for debit reader.

Wicket Reader Configuration Steps

The **Wickets Administrator** software is used to configure the WR88 Wicket Reader so that it knows how to communicate with the equipment and what to do with customer Wickets when presented. The screen shot to the lower right shows an example of the setup parameters you will need to program into your Wicket Reader. Below are the setup steps`

1.) Click the **Make A Programming Wicket** tab, then click a **Group Tab** for a group of equipment that will all operate with the same prices and parameters.

2.) Set the **Group Name** by clicking the drop-down box arrow and selecting a name from the list, or by directly entering any name you like in the box. This name will then be shown on the tab.



3.) Set the **Wicket Reader Interface** to produce a Coin Pulse Output.

4.) Set your operating prices (so the Wicket Reader will know how much to debit from a Customer Wicket) by setting the **Start Up Value** and the **Increment Value** using the Pup-Up Keypad. The Start Up Value is the minimum amount to debit to get the machine started and the Increment Amount is usually some smaller amount to debit for additional time or services once the start amount has been satisfied. If the Wicket Reader finds that the presented Wicket does not have sufficient funds to start a machine, it won't debit any funds at all from it and will blink yellow to warn of insufficient funds.

5.) Set the **Debit Limit Options** according to the number of incremental debits the machine can handle.

6.) Set the **Pulse Time** to 25ms as specified by Maytag.

7.) Set the **Pulse Value**. In most cases, coin pulses are based on a \$.25 coin.

8.) In the **Reader Options** section:

- a. Check the **No Service - Debit Lockout Enable** box to lockout further debits to customer Wickets if there is no Service Sense signal (machine did not start) for 10 minutes following a debit from the Wicket. When a lockout occurs, the Wicket Reader will continuously blink red to indicate the problem. The debit lockout condition can be cleared by starting the machine or cycling power. During debit lockout a customer can get his money refunded to his Wicket simply by reading his Wicket on the same Wicket Reader one more time. The Wicket Reader will blink green to indicate that the money has been refunded to the Wicket.
- b. Leave the second box un-checked. The Service Sense signal is a logic low voltage when the machine is running.
- c. Leave the last two boxes un-checked.

9.) When you are done, tap your Reader Programming Wicket on the Wicket Reader Programming Module to have it write this configuration information to the Wicket.

10.) Take the Reader Programming Wicket around to all of the machines that will operate with these particular configuration parameters and tap the Wicket on the machine's Wicket Reader to have it read in and program itself with these parameters. The Wicket Reader will blink green to indicate that it has successfully read the parameters from the Reader Programming Wicket.

Maytag Machine Setup

According to Maytag, only the MFR series require the below extra configuration steps to set the debit acceptance to include cards. Other models should include debit card acceptance by default. Below are instructions from the author of Maytag's "Generation 1 Debit Description" document regarding the configuration of Maytag MFR washers to properly accept and process debit pulses:

- 1) Use the service key to unlock and raise the top cover of the machine. A service mode switch changes state when the top cover is lifted so that the service mode will be available on the display menu.
- 2) From the Main Menu, press lower middle button to highlight the Price Menu.
- 3) Press the lower right button to enter the Price Menu.
- 4) Press lower right button to enter the General submenu.
- 5) Press lower middle button until Coin/Debit payment mode option is displayed.
- 6) Change option setting to "Card" or "Coin and Card" by pressing the lower left button.
- 7) Save changes by pressing the lower right button
- 8) Advance to Exit by pressing the lower middle button
- 9) Select and Exit by pressing the lower right button
- 10) Close the top cover to exit service mode

Appendix A

The wiring diagram for interfacing a WK-LV Module with the WK-WR-LV-MT wiring harness to a Maytag control board is shown below:

